

電動シャッター用開閉機

POWER OPERATOR FOR ROLLING DOOR

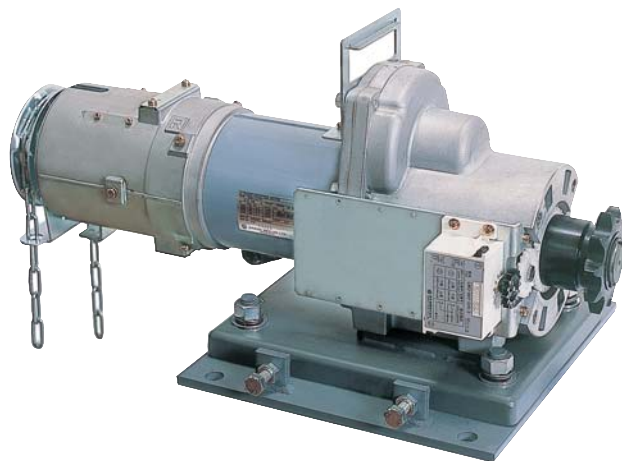
SHINSEI

USA-1000G

本開閉機を安全にご使用いただくために、ご使用前には必ず「電動シャッター用開閉機カタログ」及び「取扱説明書」をよくお読みください。

特に「警告」「注意」は必ず確認してください。

T "POWER OPERATOR FOR ROLLING DOOR" "I" "M" " " "B" "W" " " "C" " "



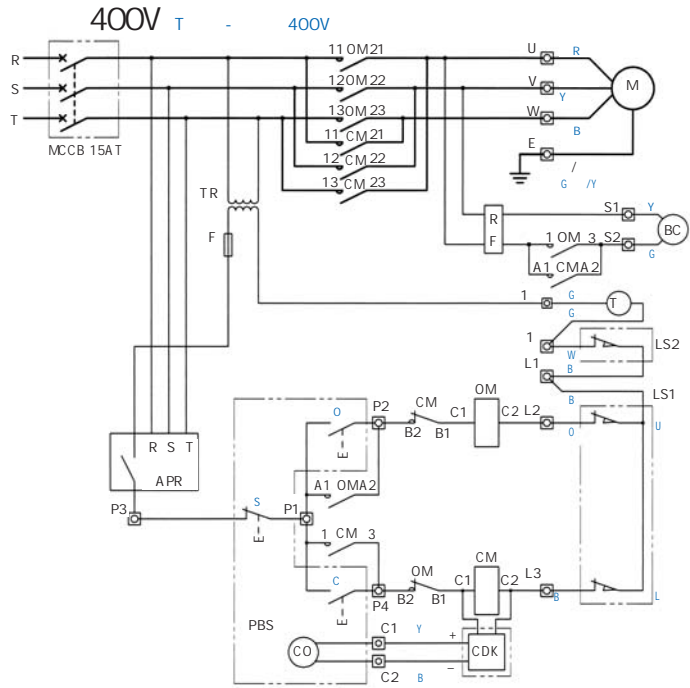
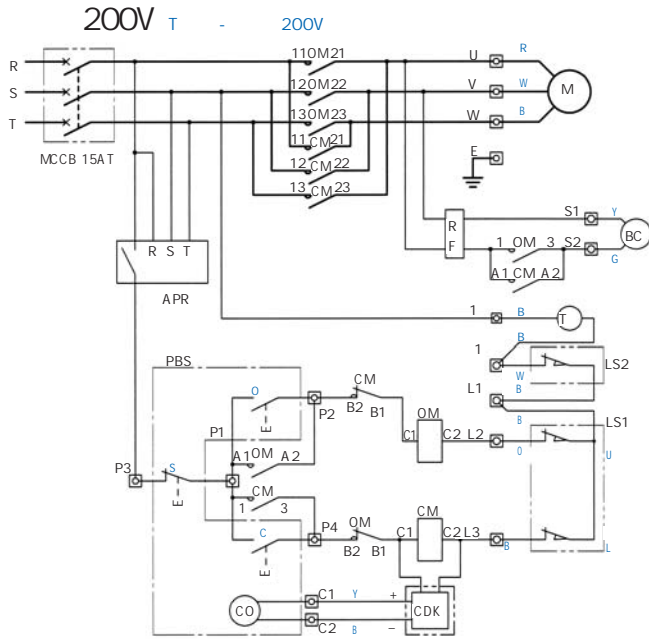
200V

M			USA - 1000G	
V			T - 200V 200V	T - 400V 400V
D	80-T 50 S	W	1100(10787N)	
		M	21(206N)	
		W	4.2/5.0	
O	S	T	N	
		M	N	
		S	17.6/20.9	
Z	F	O	W	
		S	1410/1670	
		T	3.3/3.3	1.6/1.7
		T	()	
M		()		385 ()
S /				# 80-T 10/# 80-T 50
R				# 80
O				49

R : -10 40 50H 60H 85 RH +20 10,000

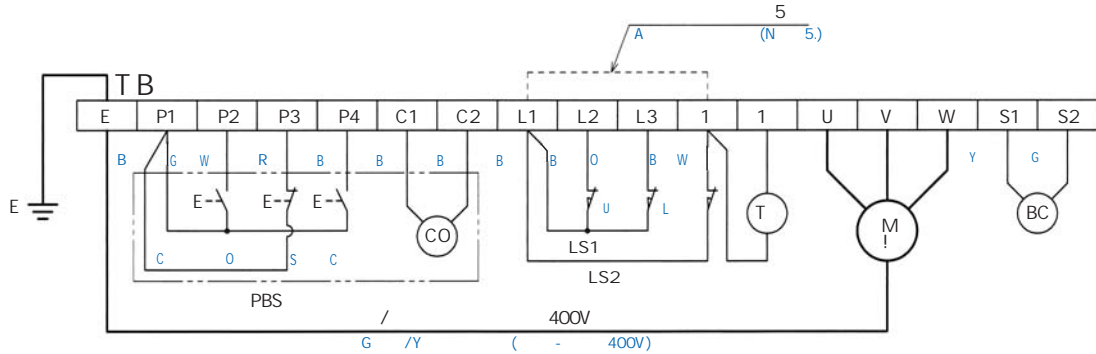
1. T
2. " / "
3. U : A -10 +40 50H ; " " 60H ; " " 85%RH
4. T
5. S +20 . I
6. D : 10,000
7. I

CIRCUIT DIAGRAM



CONNECTION DIAGRAM

200V 400V T - 200V / T - 400V



400V / GND
 * F 400V (/) C D GND.
 * I 400V (/) C D GND.

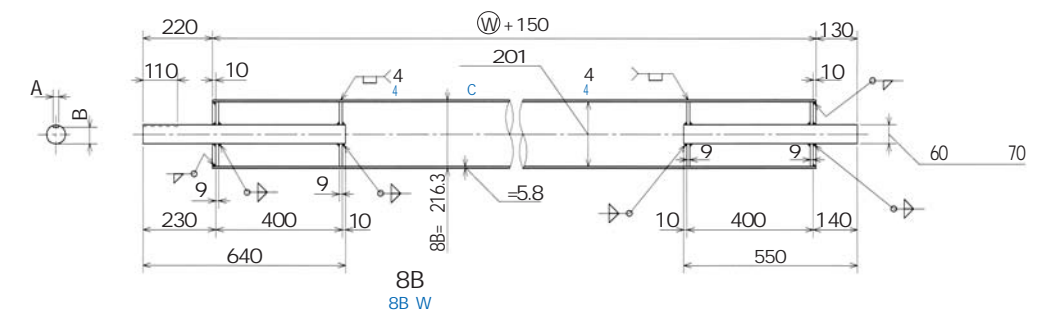
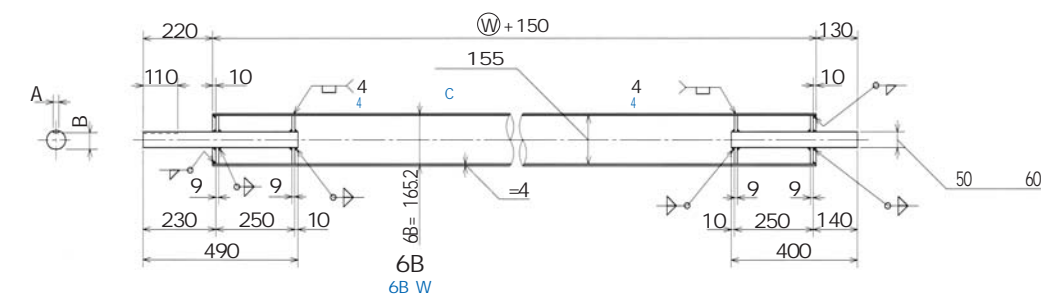
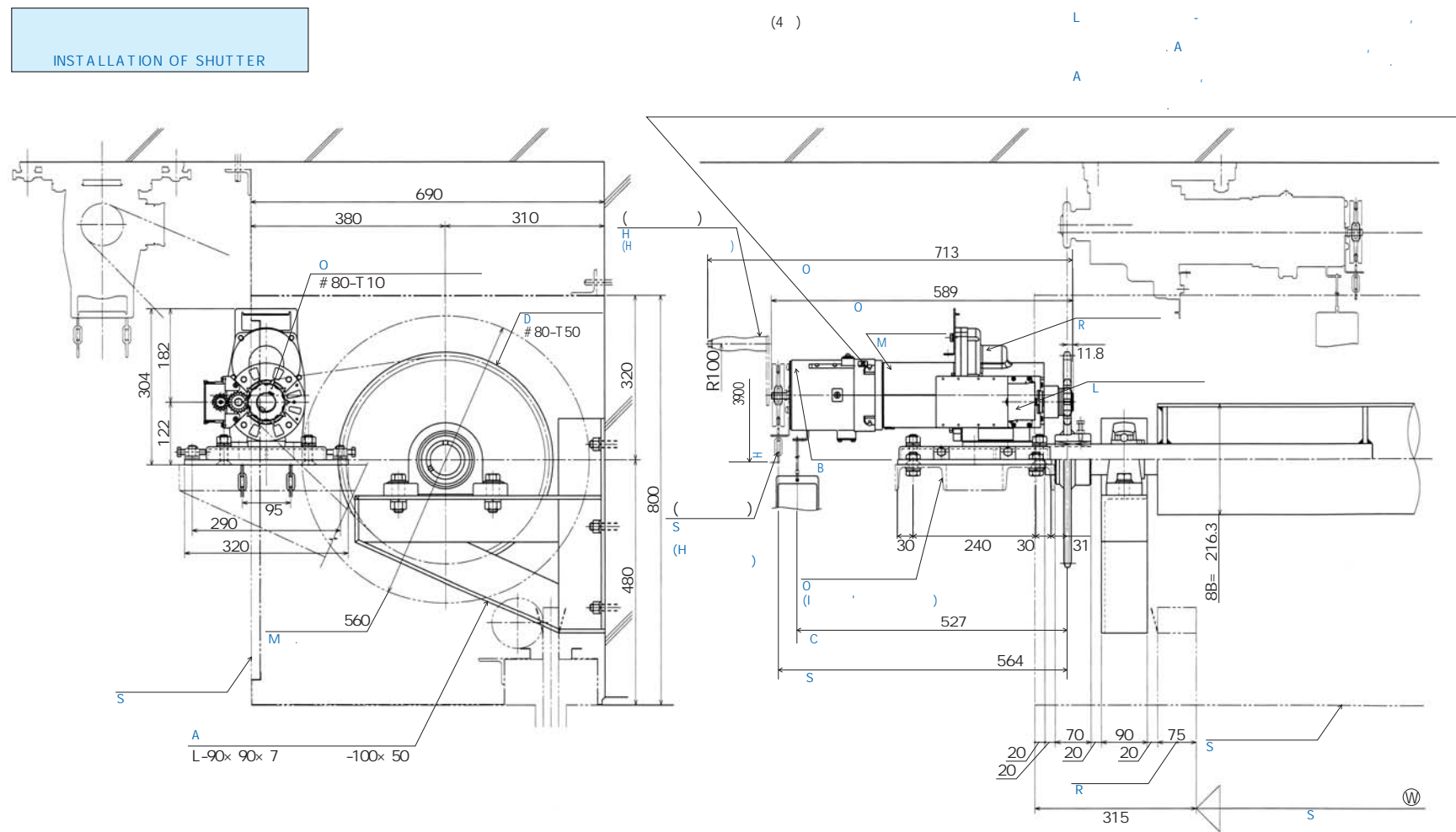
200V (U) (W)
 400V (U) (W)

L1

N :
 C T A
 T - 200V : R (U) B (W)
 T - 400V : R (U) B (W)
 C D C I
 W L1 1

S	N	R
MCCB	S	15A
M	M	
T	P	B -
BC	E	
RF	R	
C	C	
TR	T	
F	G	1A (1 1A (. 1)
PBS		AC250V 120 A ()
CO	P	
CDK	P	
LS1	L	LMD-99Y-G15-3
LS2	E	LMS-208A
OM CM	E	
APR	A	
TB	T	<input type="checkbox"/>

INSTALLATION OF SHUTTER



USA-1000G 75

100 857

75 USA-1000G.

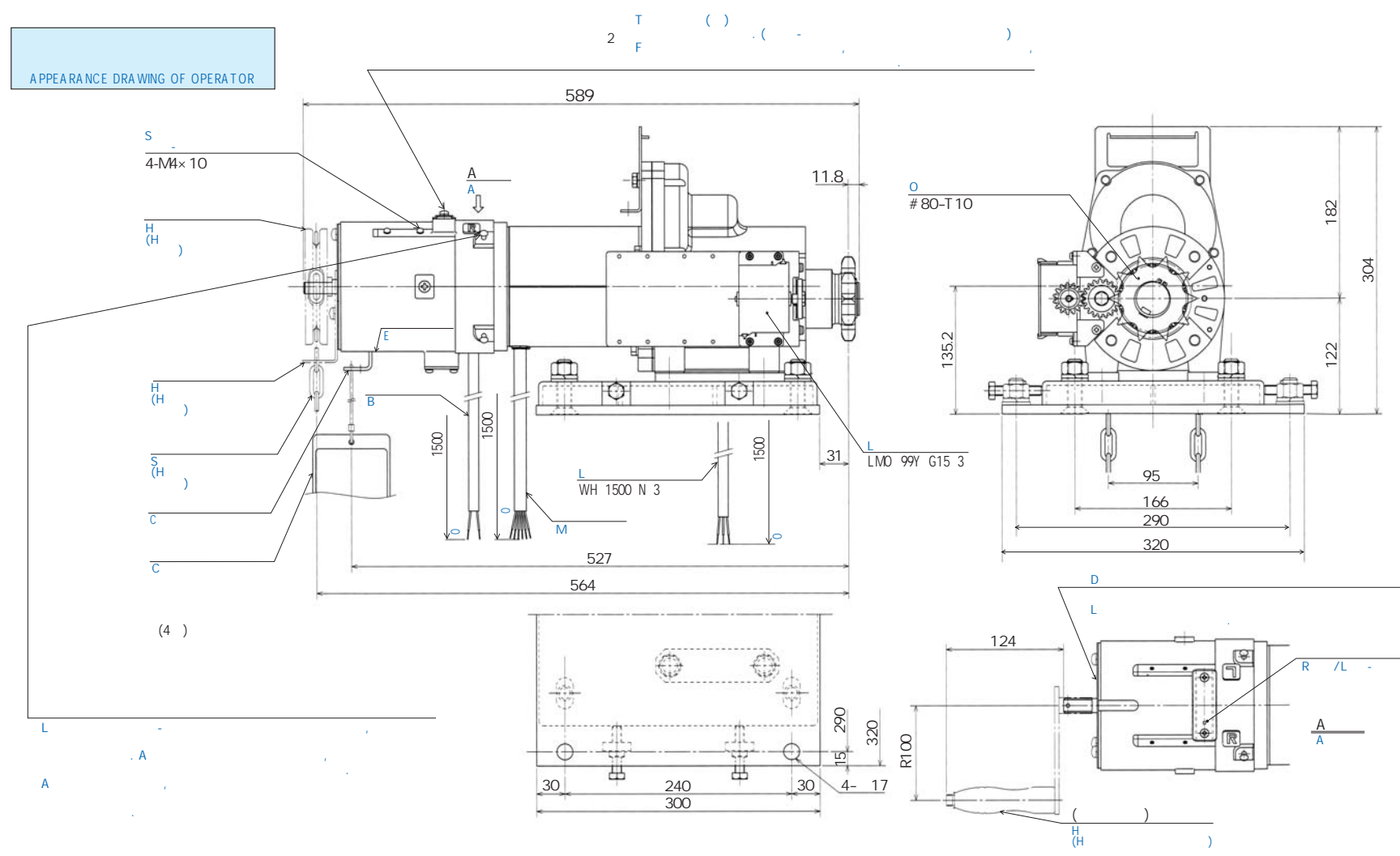
100 (857).

N

JIS(J I S &)

D (JIS)		
S	A	B
50	16 ^{+0.120} / _{+0.050}	44 ⁰ / _{-0.2}
60	18 ^{+0.120} / _{+0.050}	53 ⁰ / _{-0.2}

APPEARANCE DRAWING OF OPERATOR



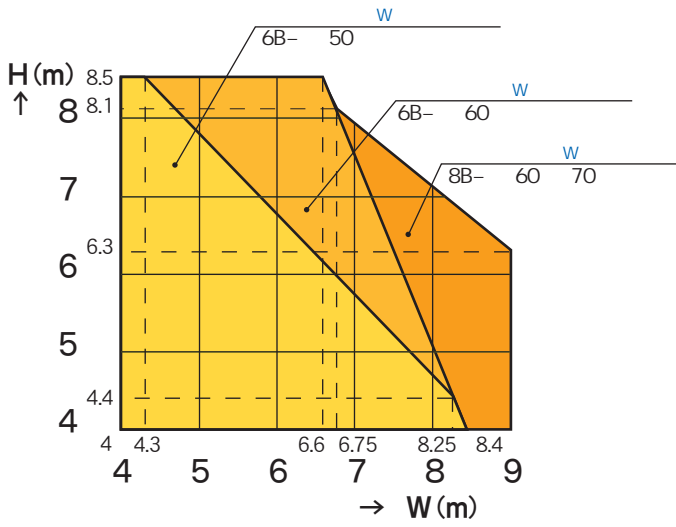
PACKAGE CONTENTS

D		
M	D	
80-50T 50	# 80-T 50	50
80-50T 60	# 80-T 50	60

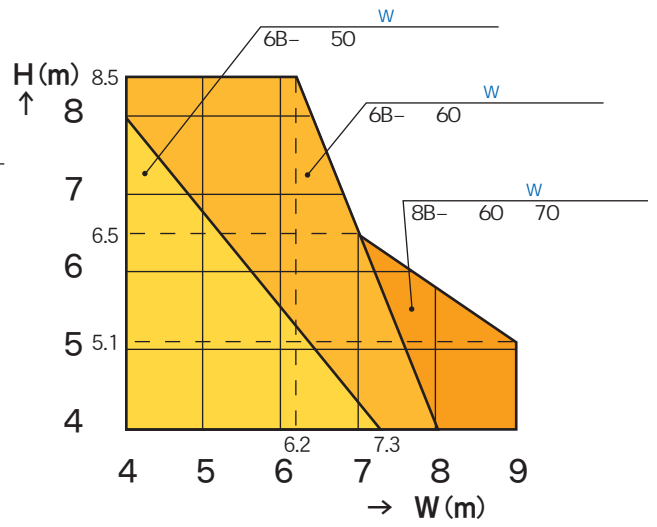
3.		
S	H (S)	H
P	L : 1	(LMD-99Y-N-6)
	L : 1	(WH-1500-N-6)
	C : 4	(LMD-99Y-N-6)
	L : 2	(WH-1500-N-6)
P	L : 2	(LMD-99Y-N-6)
	L : 2	(WH-1500-N-6)
C : 8		
S	R () + J	1

PERFORMANCE CHART

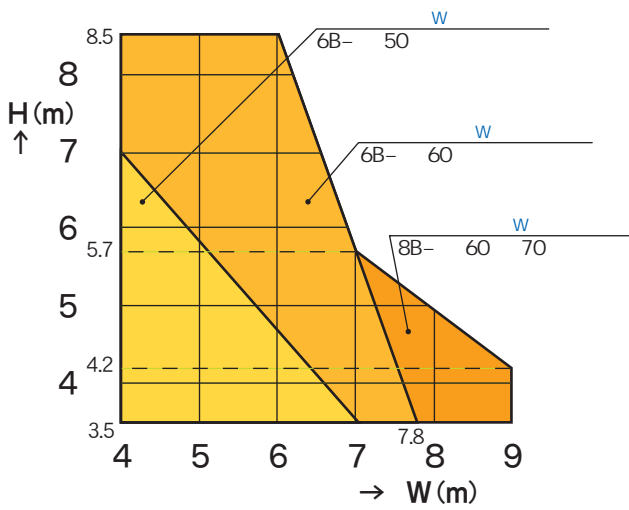
1.2 (75)



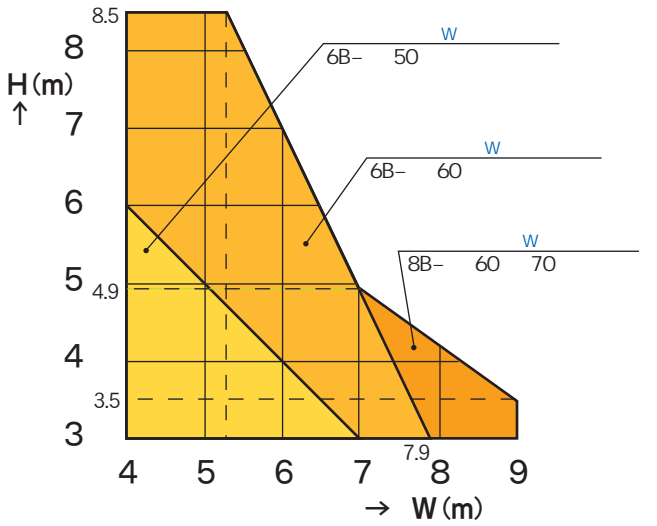
1.4 (75)



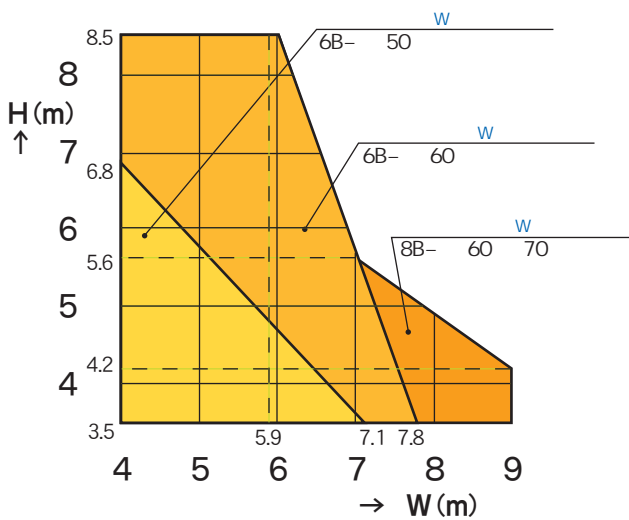
1.6 (75)



1.6



1.4 (100)



1.6 (100)

